

**BREMERTON YACHT CLUB
BLAKE ISLAND RACE**

**WSSA TROPHY SERIES RACE #6
SATURDAY, June 4, 2022**

WSSA STANDARD INSTRUCTIONS: All WSSA standard instructions, found in the front of this book, shall apply, except as may be amended herein.

REGISTRATION: Pre-registration on the BYC Website (bremertonyachtclub.org) by mail is encouraged (including BYC yachts) and should be received by June 1st. Applications delivered to the race committee not less than 30 minutes prior to the first warning signal will be accepted. Late registrations may be accepted at the discretion of the Race Committee.

COURSE: (1-2-3P-4) Start off the “gazebo” at the foot of Trenton Ave, just east of the Washington Narrows. Round Blake Island in *either* direction, leave Bainbridge Island Reef Buoy #4 to **PORT**, finish at start. Course may only be shortened at Bainbridge Island Reef Buoy #4.

DISTANCE: 16.5 nautical miles. Shortened course 11.3 miles.

DESCRIPTION OF MARKS:

1. Start line: off the “gazebo” at the foot of Trenton Ave, just east of the Washington Narrows.
2. Blake Island: Either direction.
3. Bainbridge Island Reef Buoy #4: At Bainbridge Reef, south of Bean Point to **PORT**.
4. Finish line: between RC flag on committee boat and buoy approx. 0.3 nm NE of Herron Point.

TIME LIMIT: Eight (8) hours from the start, provided that the first boat finishes within six (6) hours from its start. If no boat finishes within 6 hours, the race will be abandoned. Those boats completing the course after 10 hours will be scored "DNF". This changes RRS Rule 35.

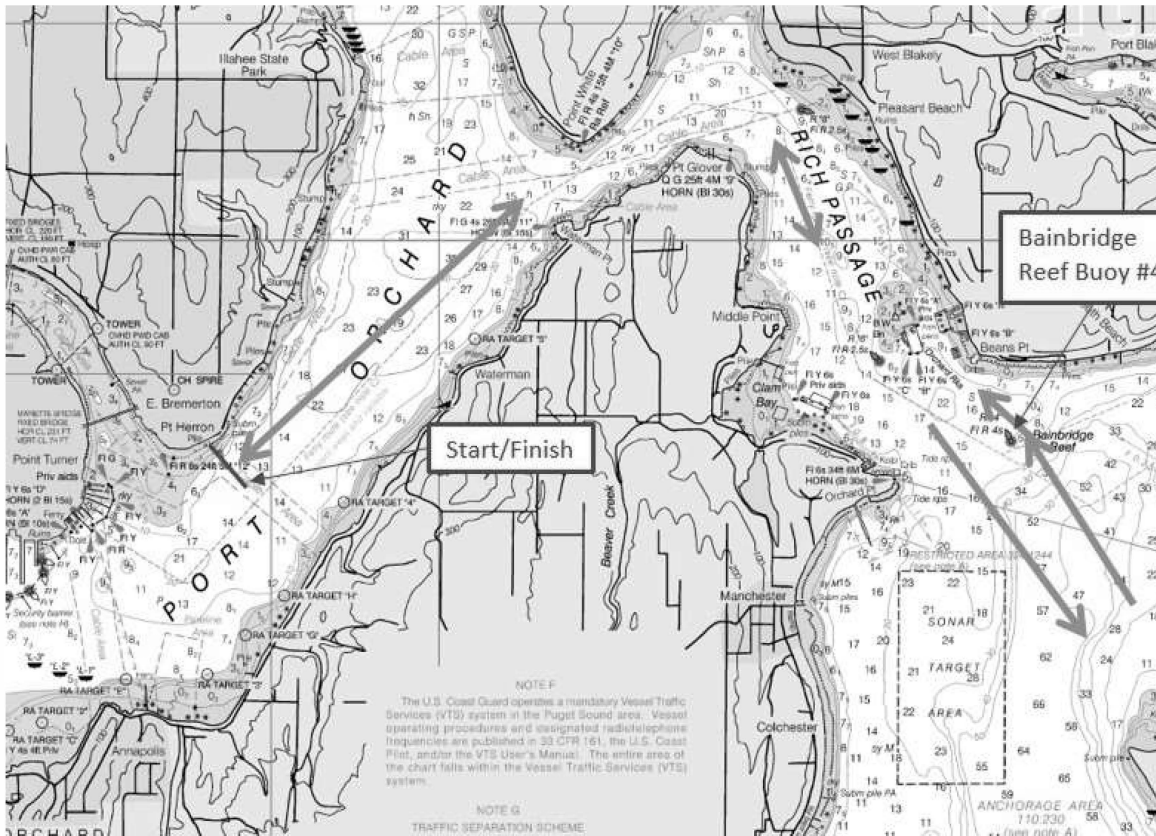
SCORING: Time-on-distance.

STARTING: First warning 10:30. Races shall be started by using the signals in Sailing Instruction 7.

TROPHIES: BYC trophies will be awarded for each division as follows: 1st place (3 or more entries), 2nd (4 or more entries), 3rd place (5 or more entries).

**BREMERTON YACHT CLUB
BLAKE ISLAND RACE WSSA TROPHY
SERIES RACE #6**

This chart is for reference only, DO NOT use for navigation!!!



All racers are advised to stay 500 yards away from all Naval ships and the Puget Sound Naval Shipyard pier heads.